

Sensor Specifications	
Overall Dimensions	358 mm x 878 mm
Sensing Area Dimensions	180 mm x 700 mm
Sensing Area Resolution	14 columns x 55 rows
Sensor Cell Resolution	12.7 mm x 12.7 mm

1	Border Thickness (Non cabling side)	0.8 mm
2	Sensing area thickness	1.5 mm
3	Edge Thickness	2.0 mm
4	Border Thickness (Cabling side)	3.0 mm

Sensor Cover Material	Black Polyester
Sensor Area Markings	Outline only, no numbers

Cable Dimensions (mm)	1219.2 x 30 x 5
Connector Dimensions (mm)	121 x 70 x 23

Pressure Range	5 - 30 mm Hg
Calibration Accuracy	+/- 10% Full Scale

Notes:
 1) Calibration accuracy is based on XSENSOR calibration procedures and test conditions.
 2) Tolerances on dimensions are within +/-5% of stated value
 3) Unless otherwise specified, dimensions are in mm.
 4) The sensor is not designed to be immune to customer-specific environmental noise.

UNLESS OTHERWISE SPECIFIED:
 DIMENSIONS ARE IN MM [INCHES]

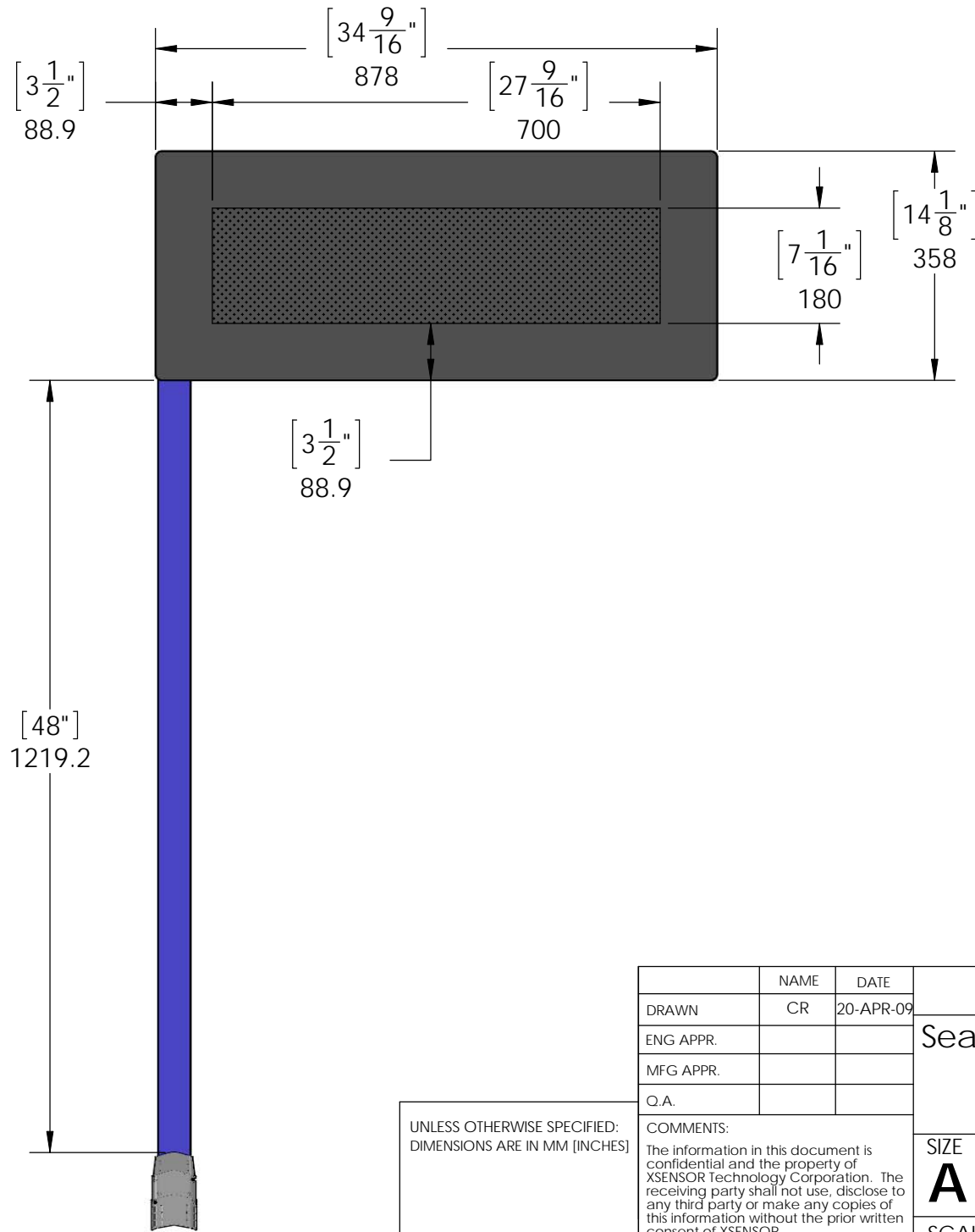
	NAME	DATE
DRAWN	CR	20-APR-09
ENG APPR.		
MFG APPR.		
Q.A.		



Seatbelt Sensor

COMMENTS:
 The information in this document is confidential and the property of XSENSOR Technology Corporation. The receiving party shall not use, disclose to any third party or make any copies of this information without the prior written consent of XSENSOR.

SIZE A	DWG. NO. PX100.14.55.02	REV 1
SCALE: 1:6		SHEET 1 OF 2



UNLESS OTHERWISE SPECIFIED:
DIMENSIONS ARE IN MM [INCHES]

	NAME	DATE
DRAWN	CR	20-APR-09
ENG APPR.		
MFG APPR.		
Q.A.		

XSENSOR Technology Corporation

Seatbelt Sensor

COMMENTS:
The information in this document is confidential and the property of XSENSOR Technology Corporation. The receiving party shall not use, disclose to any third party or make any copies of this information without the prior written consent of XSENSOR.

SIZE A	DWG. NO. PX100.14.55.02	REV 1
SCALE: 1:6		SHEET 2 OF 2