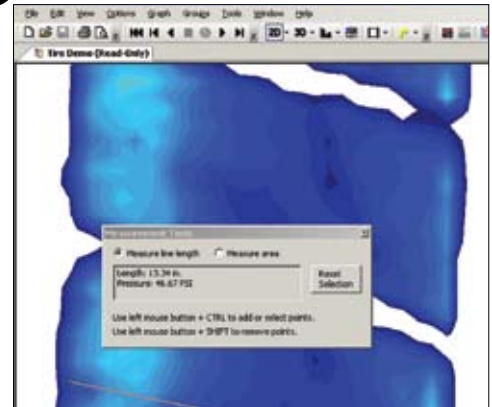


#### PRODUCT DESCRIPTION

**X3 PRO** software is an essential part of **X3 PRO** product series used to support automotive and industrial research, design, and process control. Developed with the power user in mind, the **X3 PRO v6.0** software features a faster, more powerful engine with enhanced analytical tools. Benefit from a boost in sampling rates for high resolution sensors and multiple sensors.

By acquiring the new PRO v6.0 software, you are giving your X3, multi-sensor pack sensors a performance boost and adding a host of powerful new features to your tool set\*. XSENSOR has also retained the same PRO v5.0 features critical to your research in this new software. **X3 PRO v6.0** is a major step in transforming your current **X3 PRO** system to a more efficient testing, research, and process control solution.

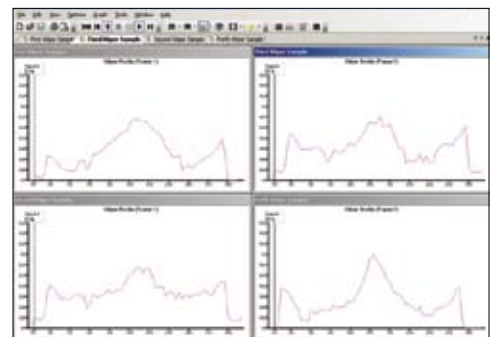


Line measurement of tire width

#### PRO V6.0 – NEW FEATURE HIGHLIGHTS

##### Engine Performance Improvements

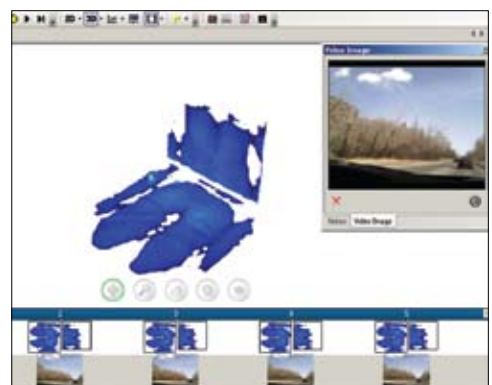
- Collected data is saved immediately to the disk reducing the risk of data loss
- Over 100% faster frame rate for 4 sensor pack system with 65,536 sensing points
- Load or save up to 500GB files in under 1 second
- Allows for sessions with up to 100 million frames or 500GB of data



Profile comparison of 4 windshield wiper blades

##### File Comparison Tools

- Simultaneous playback of up to 4 files
- Multiple frame and file comparisons
- Windshield wiper sensor users can graph multiple files for product and data comparisons



Preview strip with pressure image and video

##### Measurement Tools

- Line measurement allows users to measure pressure image dimensions
- Area measurement allows users to calculate areas within a pressure image

##### Imaging Tools

- Thumbnail preview strip displays each frame in filmstrip format
- Thumbnail view includes preview of attached videos, photos, and notes
- Improved overall frame navigation
- Improved 2D zoom functionality

##### Export/Analysis Tools

- Copy, paste, select pressure values from 2D image directly into spreadsheet
- Export a sensor group in its original shape directly into a spreadsheet
- Copy, paste, cross-section values into spreadsheets (cross-hair or average)
- Export files into html viewable format

Export of grouped data into spreadsheet

\*Dual core processor computer required. Also dependent on sensor configurations.

**FEATURES**

<b>X3 Connection Status</b>	View the connection status of all sensors, sensor packs, and electronics* connected to your computer. Toggle the view mode to see sensor usage statistics, such as when the sensor was last calibrated and the length of time the sensor has recorded data
<b>Dynamic Preview Mode</b>	View live, dynamic data before recording to ensure relevant information is captured
<b>Record Live Pressure Imaging Sessions</b>	Capture and record pressure imaging data for analysis and review
<b>Time and Recording Triggers</b>	Set recording session delays and triggers to capture specific data
<b>Pressure Movie Creation</b>	Generate movie files in XSENSOR software to share dynamic sessions with those who do not have XSENSOR software
<b>Video Synch</b>	Record and synchronize digital video (DV) cameras using IEEE 1394 FireWire or USB webcams to XSENSOR pressure imaging files

\* Only new X3 PRO Platforms with USB 2.0

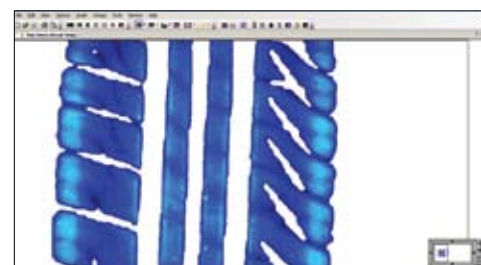
**VIEWS**

Each XSENSOR view mode has multiple settings and options to control sensor data viewing:

<b>2D</b>	Top view of the sensor shows pressure levels in different colours defined by the pressure isobar legend, view can be rotated or flipped to match positioning
<b>3D</b>	Perspective view of the sensor show pressure levels in different colours and height contours; rotate view in any direction to maximize visual clarity
<b>Frame Compare</b>	Show up to 4 snapshots side-by-side from a session for easy comparison
<b>Pressure vs. Time</b>	Graph of pressure readings over time; pressure reading can be either peak or average for the sensor
<b>Numeric Mode</b>	2D mode shows numerical pressure readings in each sensing cell and dynamic full-colour display
<b>Cross-Section</b>	Show dynamic, averaged cross-sections of pressure images in 2D view mode



X3 Connection Status



Enhanced 2D zoom functionality

**ANALYSIS AND STATISTICS**

X3 PRO v6.0's features help support the dynamic analysis of pressure readings within a user-defined group or the entire sensor pad:

<b>Peak Pressure</b>	Monitor the highest pressure on one or more cells of a given pressure imaging data frame
<b>Average Pressure</b>	Calculate an average pressure over the entire sensor surface
<b>Contact Area</b>	Calculate area of the sensor loaded by a subject
<b>Sensor Cell-Group Analysis</b>	Define groups of sensing cells for separate analysis from the rest of the pressure image; same statistical analysis tools for entire system can also be applied to sensor cell groups, define group templates to facilitate sensor cell-group analysis, and measure the statistical variance of the sensor output in your defined sensor groups
<b>File Compare</b>	Examine up to four pressure imaging sessions simultaneously to compare and analyze data

0011-800-5913-4444 (International) 111, 319-2nd Avenue SW.  
 1-866-927-5222 (North America) Calgary AB T2P 0C5 Canada  
 Tel +403-266-6612  
 Fax +403-205-4013  
 sales@xsensor.com

**XSENSOR** Technology Corporation  
 Innovators in Pressure Imaging